

Swansoft Technical Document

A method to import various CAD/CAM (such as UG, Pro/E, CAXA, SolidWorks, etc.) software generated or self-edited CNC programs from the software.

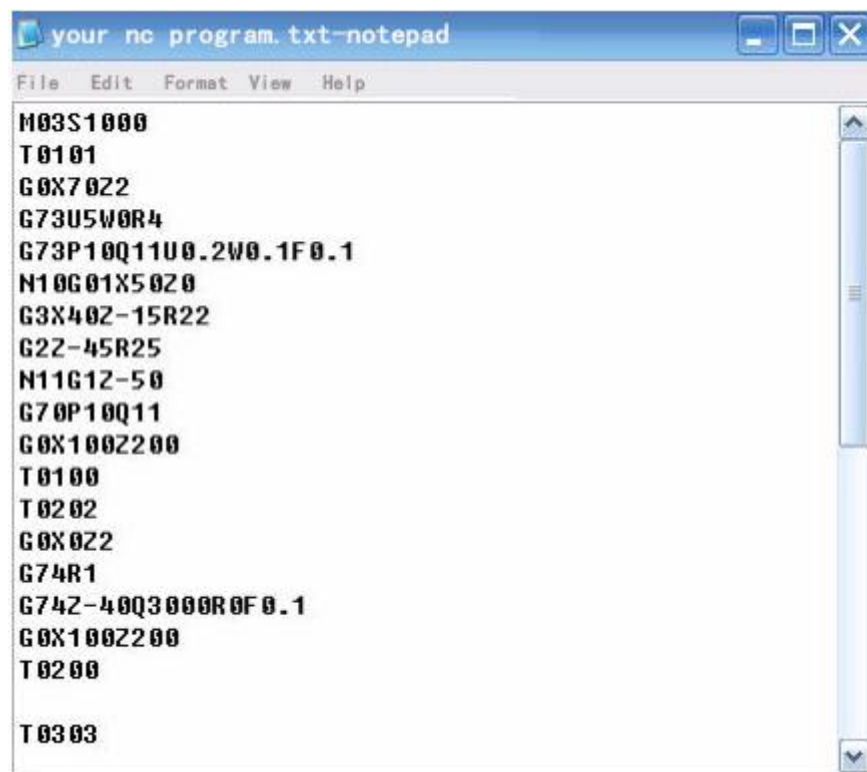
1. Method of importing self-edited NC program Method of importing self-edited NC program.

(1) First, you need to create a new program in the software.



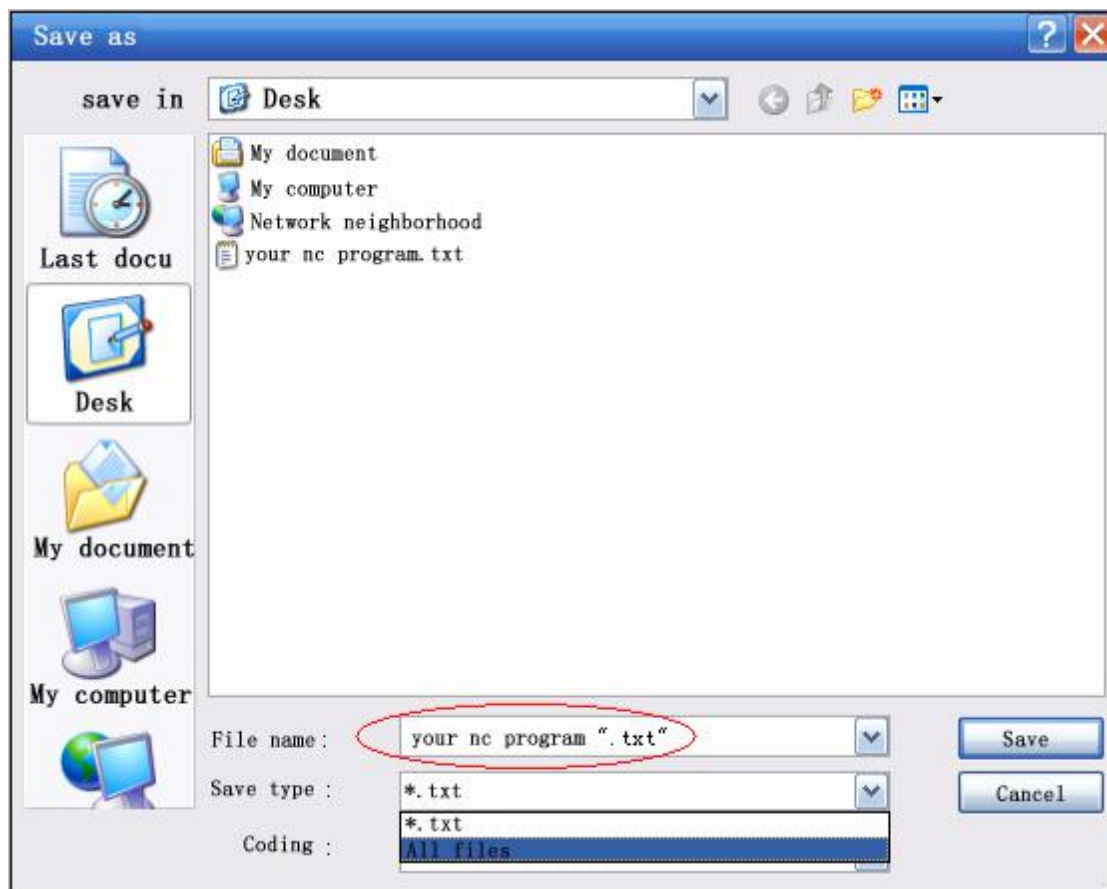
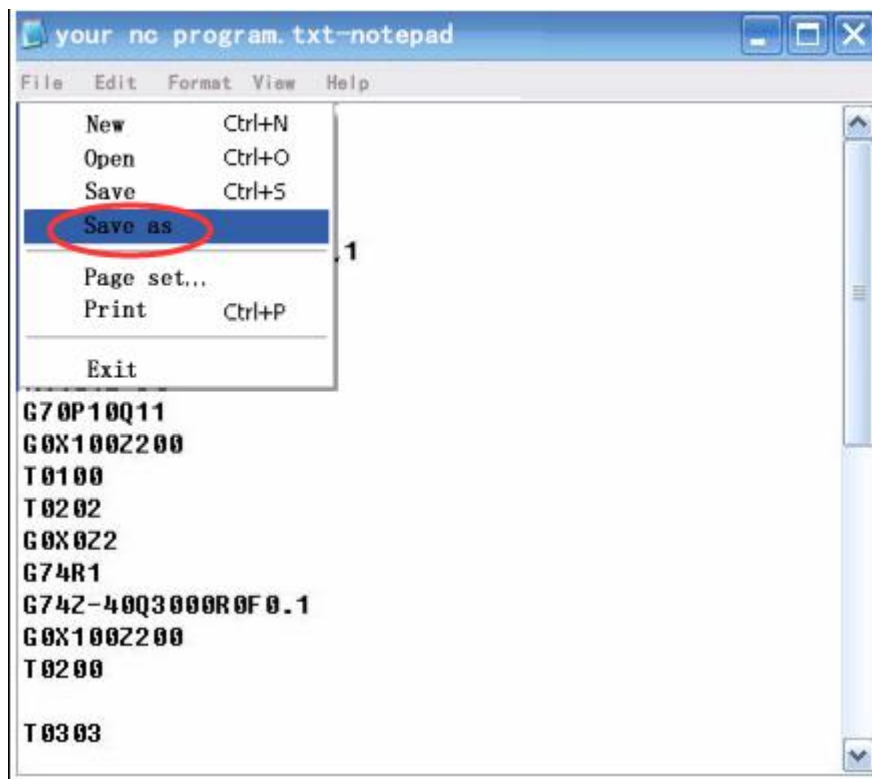
(2) Create a new one  .txt, the format suffix is .txt.

(3) Paste your NC program into the notepad.



(4) Select the File "Save As", switch the file type to "all files", write the file name as "your nc program" and add ".txt" (if it is FANUC series, you can also add .nc or .cnc; if it is SIEMENS The

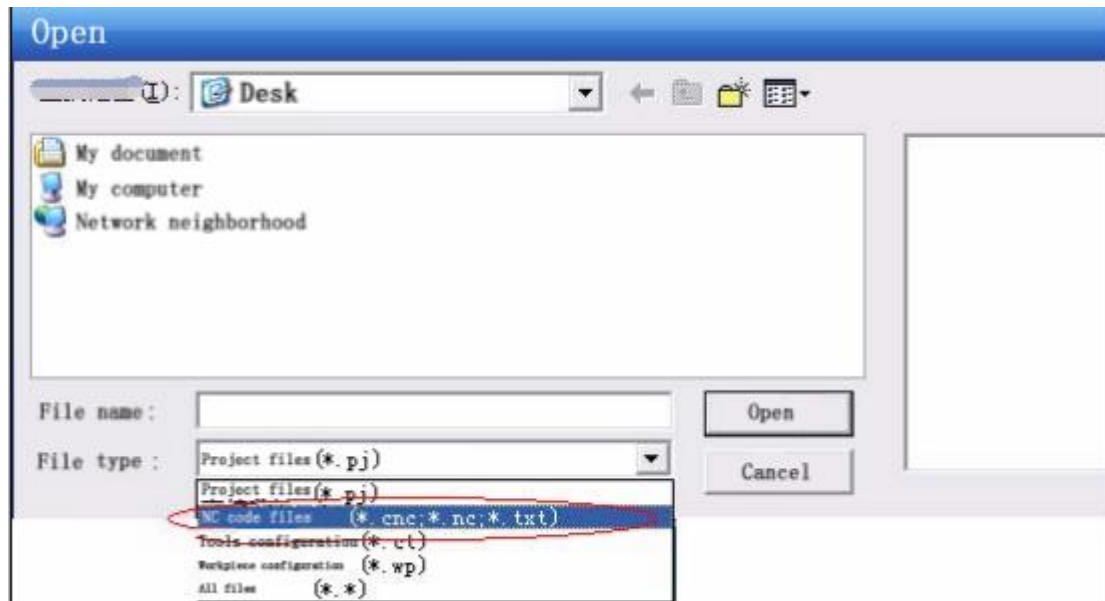
series can be added with .mpf or .spf).



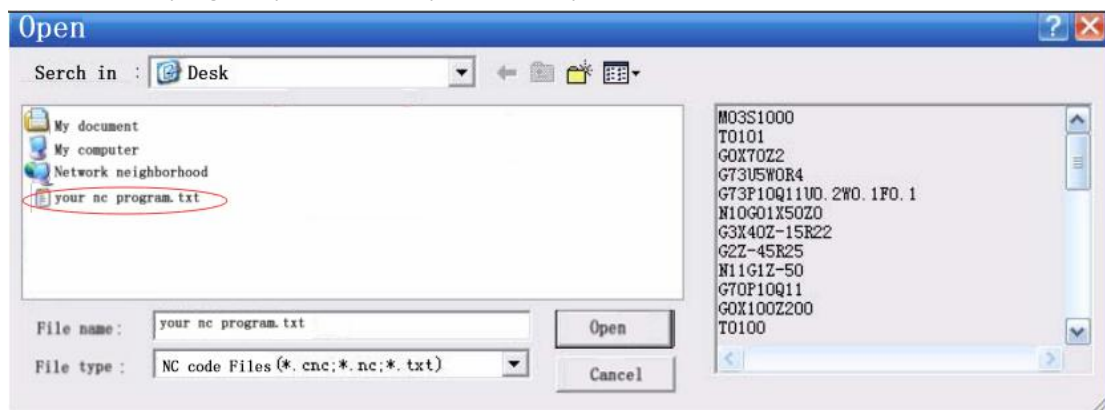


(5) Select "Open File" in the left toolbar .

(6) Select the file type as NC code file.



(7) Select the program you want to open, click "Open", or double-click the file.



(8) The program is imported successfully.



2. The method of importing various CAD/CAM (such as UG, Pro/E, CAXA, SolidWorks, etc.) software to generate NC programs only needs to use the above 1, 5, 6, 7, and 8. (Note: When generating a CNC program from CAD/CAM software, you must select the CNC system to be used, and then generate the CNC program, so that it can be directly imported into the corresponding CNC system of Swansoft).